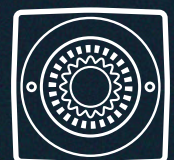
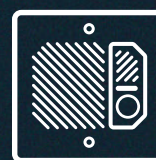


# ALGO

Brand Catalog

2026







## THE ALGO STORY

# Over 50 Years of Trusted Communication Experience

For more than five decades, Algo has designed and manufactured purpose-built communication endpoints for paging, emergency alerting, and secure access control. Our portfolio includes IP speakers, paging adapters, visual displays, intercoms, and related solutions engineered for reliability, scalability, and performance.

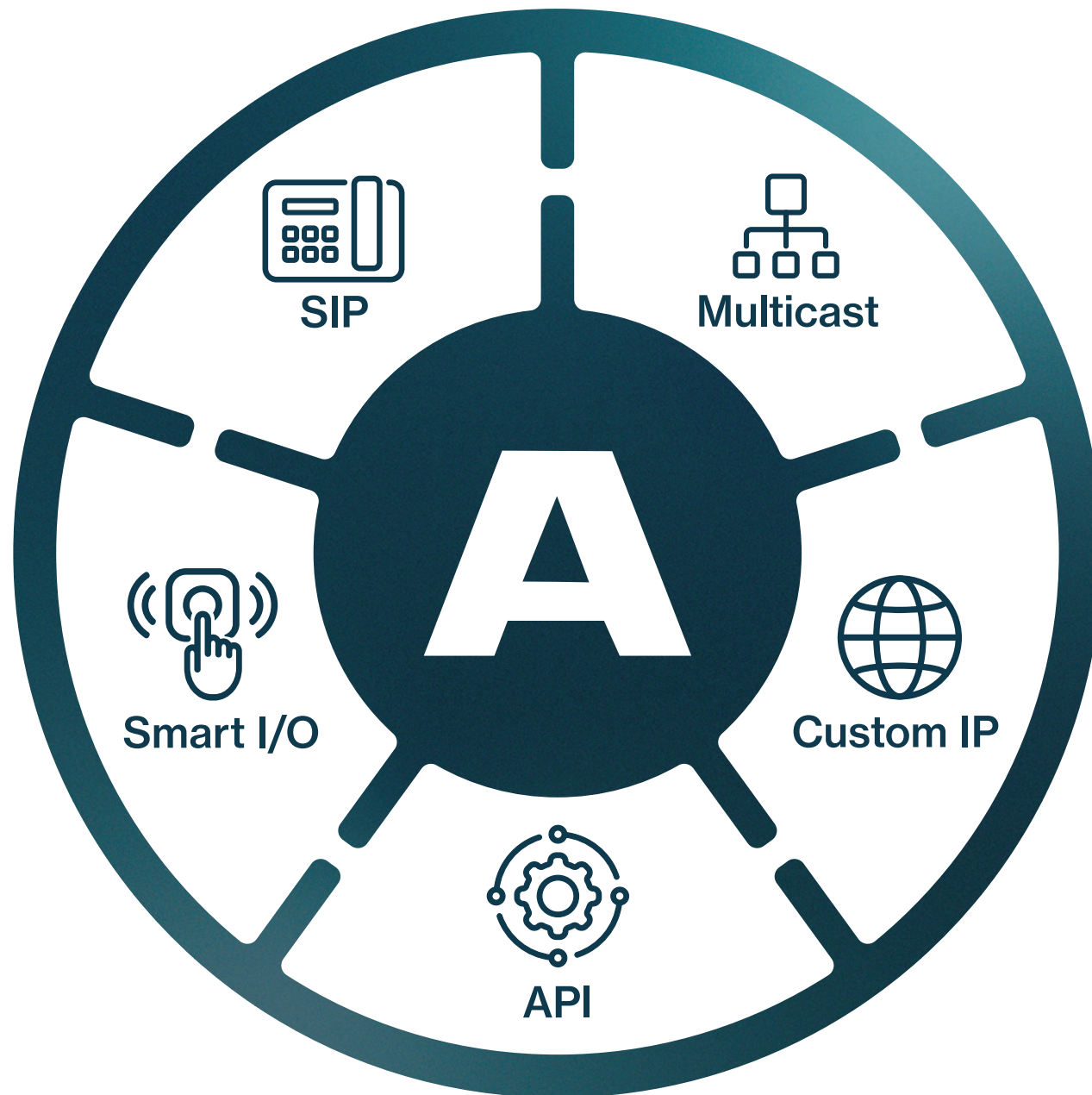
Founded in 1968, Algo has evolved alongside the communications industry, supporting customers as they transitioned from analog systems to IP and unified communications (UC) environments.

This longevity, combined with deep technical expertise, enables us to deliver solutions that integrate seamlessly into modern enterprise infrastructures while meeting the demands of mission-critical use cases.

Through a global network of distributors, integrators, and resellers, Algo solutions are deployed worldwide. From daily operations to emergency response, organizations rely on Algo to deliver clear, dependable communication in environments where safety, security, and performance are essential.

ABOUT US

# IP Endpoint Leaders



Algo designs IP endpoints engineered for consistent performance, seamless integration, and long-term scalability. Built on open standards and flexible architectures, our products integrate smoothly into enterprise networks and UC platforms while remaining simple to deploy and manage.

#### SIP Interoperability

---

Algo products support industry-standard SIP, ensuring compatibility with leading UC platforms and broad interoperability within existing voice infrastructures.

#### API Enablement

---

With RESTful API support, Algo devices allow organizations and partners to extend functionality and connect IP endpoints to enterprise platforms and broader systems.

#### Custom IP Integration

---

Algo enables custom IP integrations with proprietary and third-party systems, allowing organizations to tailor communication solutions to specific operational and security requirements.

#### Multicast Functionality

---

Native multicast support enables efficient, scalable audio distribution and zoning, supporting large deployments with minimal network overhead.

#### Hardware Integration

---

Algo devices feature intelligent I/O capabilities that enable secure, real-time integration with buttons, sensors, amplifiers, and control systems, supporting coordinated communication workflows across the enterprise.

Learn more: [Algo Features p. 39](#)

### UC COMPATIBILITY

# Integration Across Platforms

Algo IP endpoints are engineered for seamless integration with a wide range of Unified Communications, Collaboration, and Mass Notification systems. Recognized for their versatility and compliance with industry standards, Algo devices support over 80 leading platforms, ensuring reliable and expansive connectivity options. Whether you're implementing a complex enterprise solution or a specialized communication setup, Algo's interoperability with these trusted partners guarantees optimal performance and enhanced system functionality across various environments.

### UC Platform Integrations



### Mass Notification Integrations



### Hardware and Other Technology Integrations



### SOLUTIONS BY APPLICATION

# IP Audio for Paging

Algo delivers IP audio solutions that transform traditional paging into a flexible, network-based communication system. By leveraging standard IP networks, Algo's technology eliminates the need for dedicated cabling and proprietary infrastructure, enabling seamless integration with VoIP and mass notification systems.

Algo's IP audio solutions leverage SIP-based connectivity to seamlessly integrate with VoIP and unified communication systems, delivering clear and reliable audio for paging, notifications, and alerts. By connecting directly to an IP phone system, Algo endpoints enable organizations to broadcast live or pre-recorded messages with ease, ensuring critical information reaches the right people at the right time.

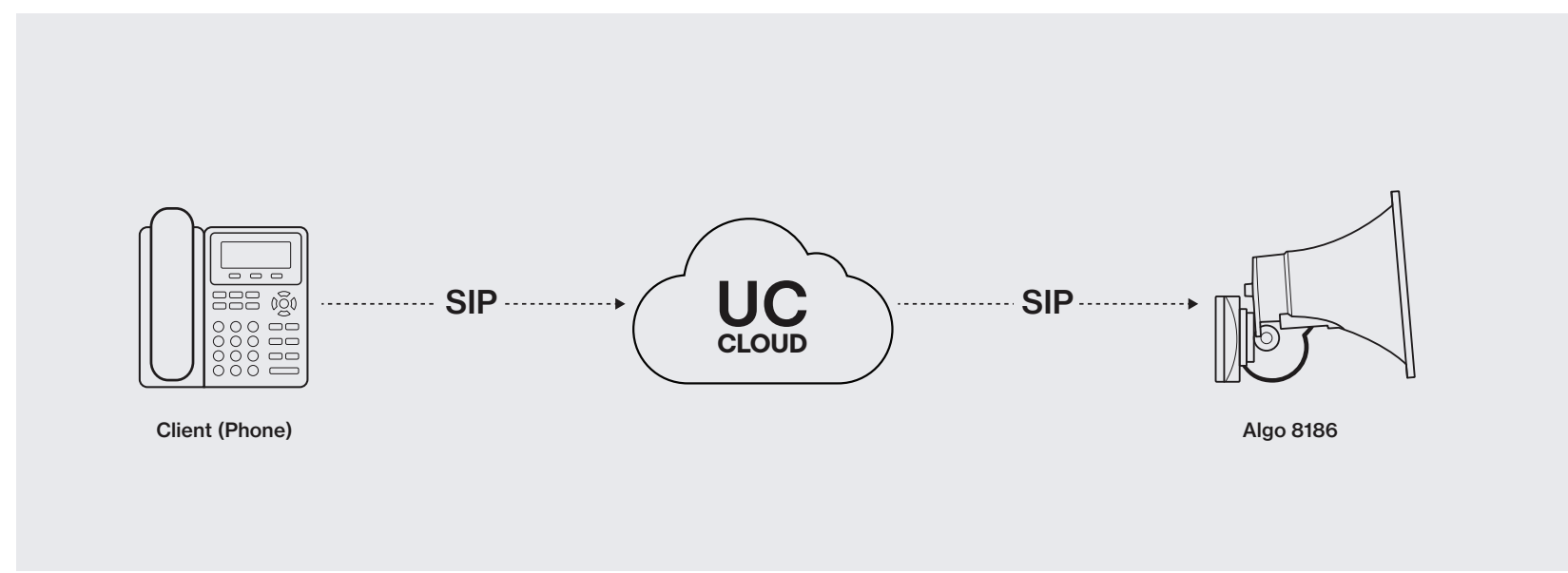


Diagram featuring pure IP paging

### Full IP Environments

Deploy a fully IP-based paging system with Algo's suite of IP speakers, visual alerters, paging adapters, displays, and intercoms. These solutions leverage SIP and multicast for scalable, high-quality audio communication across any facility.

### Hybrid IP Environments

For organizations with existing analog infrastructure, Algo paging adapters bridge the gap by enabling legacy amplifiers and speakers to function within an IP-based system. This approach ensures effective communication while extending the life of existing equipment.

Learn more: [Algo Features p. 39](#)

### SOLUTIONS BY APPLICATION

## Loud Ringing

Algo's IP loud ringing solutions are designed to ensure phone notifications are heard clearly, even in noisy or expansive environments. With high amplification capabilities, Algo IP speakers are ideal for warehouses, factories, and open office spaces where standard phone rings may be missed due to ambient noise. These self-amplified speakers provide a significantly louder alert compared to traditional ringers, enhancing call visibility across a facility. They can integrate seamlessly into VoIP systems via SIP registration and support multicast, allowing notifications to be distributed across multiple devices for comprehensive coverage.

Learn more: [IP Speakers p. 17](#)



## Visual Notification

Algo's solutions for visual notification deliver clear, attention-getting visual messaging, used in combination with audible alerts to provide a synchronized audio-visual communication experience. This dual delivery ensures messages are effectively conveyed in environments where visual confirmation enhances understanding, such as noisy or visually demanding settings. Algo visual notification devices feature long-lasting, wide-angle viewable LCD displays. Armed with core Algo features of PoE, SIP, Multicast, and API, Algo devices ensure that critical alerts are both seen and heard, maximizing impact and response effectiveness.

Learn more: [IP Display Speakers p. 25](#), [IP Visual Alerters p. 27](#)



## Emergency Notification

Algo devices are engineered for critical alerting in emergency situations, featuring attention-getting audible and visual alerts to ensure clear communication during urgent events. Equipped with loud wideband audio, ambient noise response, and attention-getting visual indicators, these solutions are designed to be heard and seen even in challenging environments. The devices integrate seamlessly with VoIP and mass notification systems, offering flexible alert triggers via SIP, multicast, API, or smart relay inputs for scalable distribution.

Learn more: [IP Speakers p. 17](#), [IP Display Speakers p. 25](#), [IP Visual Alerters p. 27](#)



## Secure Door Entry

Algo PoE Intercoms and doorphones provide hands-free visitor communication and access control at a secure door or gate entry. Both audio and audio-video models are available to choose from. All intercom products are outdoor rated and SIP compatible for integration with leading UC systems.

Learn more: [IP Intercoms p. 35](#)





INDUSTRIES

# Solutions by Vertical

- Education
- Healthcare
- Manufacturing
- Retail
- Transportation
- Government

Because we understand the requirements within these industries, Algo designs IP endpoints to support the operational, safety, and compliance demands of mission-critical environments. Our portfolio is purpose-built for organizations that require dependable communication for both day-to-day operations and emergency response.

Algo solutions scale seamlessly from single facilities to global deployments, integrating cleanly into existing infrastructure while maintaining centralized control and consistent performance.

With flexible architectures and site-specific configurability, Algo enables organizations to deploy communication systems tailored to their unique requirements, enhancing operational efficiency while supporting safety and security across every vertical we serve.

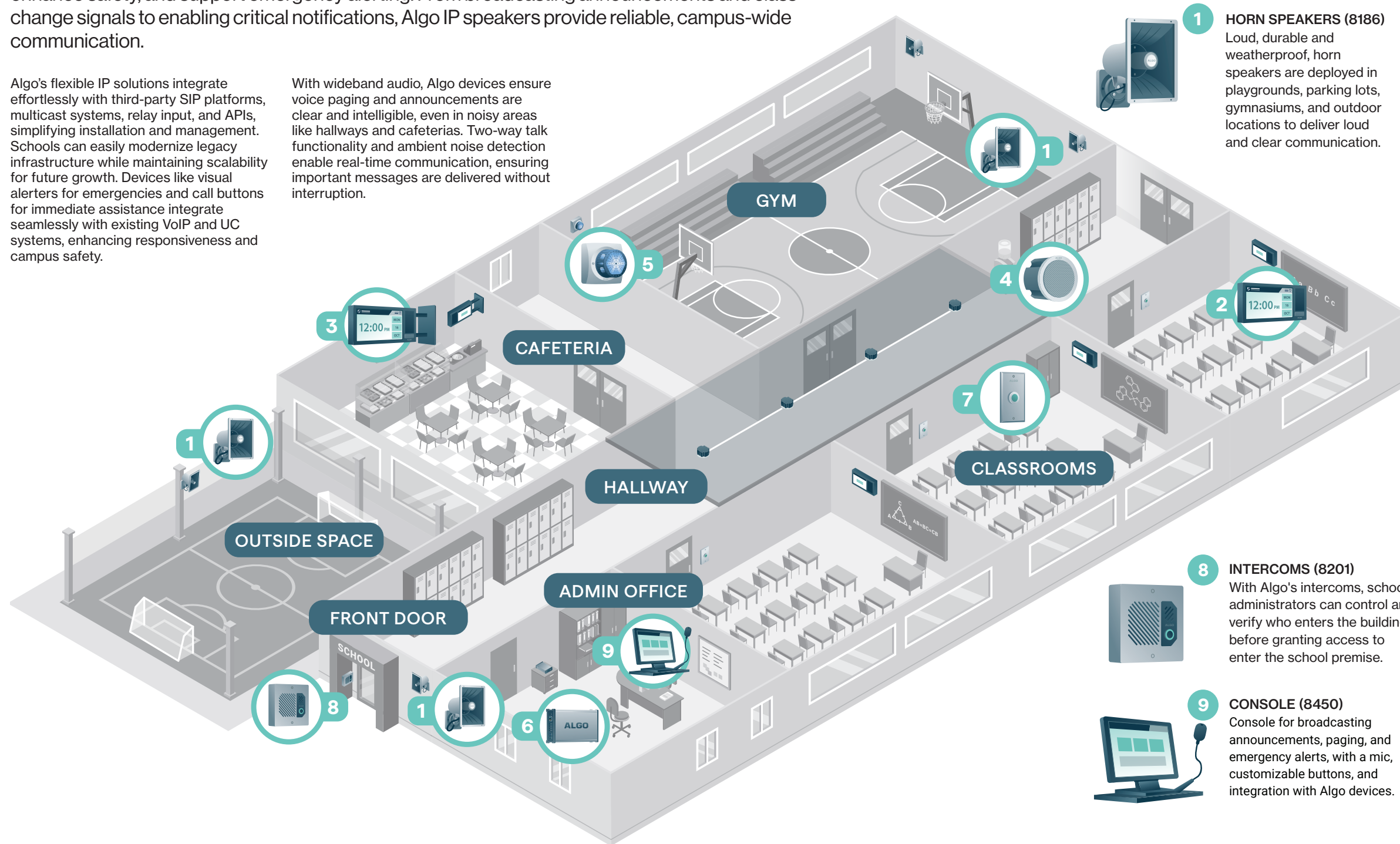
INDUSTRIES

# IP Endpoints for Education

In education environments, Algo devices offer practical tools to streamline communication, enhance safety, and support emergency alerting. From broadcasting announcements and class change signals to enabling critical notifications, Algo IP speakers provide reliable, campus-wide communication.

Algo's flexible IP solutions integrate effortlessly with third-party SIP platforms, multicast systems, relay input, and APIs, simplifying installation and management. Schools can easily modernize legacy infrastructure while maintaining scalability for future growth. Devices like visual alerters for emergencies and call buttons for immediate assistance integrate seamlessly with existing VoIP and UC systems, enhancing responsiveness and campus safety.

With wideband audio, Algo devices ensure voice paging and announcements are clear and intelligible, even in noisy areas like hallways and cafeterias. Two-way talk functionality and ambient noise detection enable real-time communication, ensuring important messages are delivered without interruption.



**1 HORN SPEAKERS (8186)**  
 Loud, durable and weatherproof, horn speakers are deployed in playgrounds, parking lots, gymnasiums, and outdoor locations to deliver loud and clear communication.

**2 DISPLAY SPEAKERS (8410)**  
 Algo's Display Speakers bring attention-grabbing visual and audible communication in a single device for voice paging and notifications in classrooms.

**3 DISPLAY SPEAKERS (8420)**  
 Designed to deliver highly notable visual alerting in multiple directions, this device offers ideal audible and visual notification in hallways or large open spaces.

**4 CEILING SPEAKERS (8198)**  
 The 8198 PoE+ speaker powers up to three satellite speakers, delivering cost-effective, wide-area coverage for paging, background music, and notifications.

**5 VISUAL ALERTERS (8138)**  
 Signal events with visual alerts for emergencies or daily messaging. The 8138 also integrates with door sensors to notify staff of open or closed doors.

**8 INTERCOMS (8201)**  
 With Algo's intercoms, school administrators can control and verify who enters the building before granting access to enter the school premise.

**6 PAGING ADAPTERS (8301)**  
 Integrate analog PA systems into IP environments. Paging adapters enhance communication with an embedded scheduler for bells and announcements.

**9 CONSOLE (8450)**  
 Console for broadcasting announcements, paging, and emergency alerts, with a mic, customizable buttons, and integration with Algo devices.

**7 CALL BUTTONS (1203)**  
 Utilized to report safety concerns within the school premises, call buttons quickly and easily initiate calls in case of emergencies and security threats.

Learn more: [Algo Features p. 39](#)

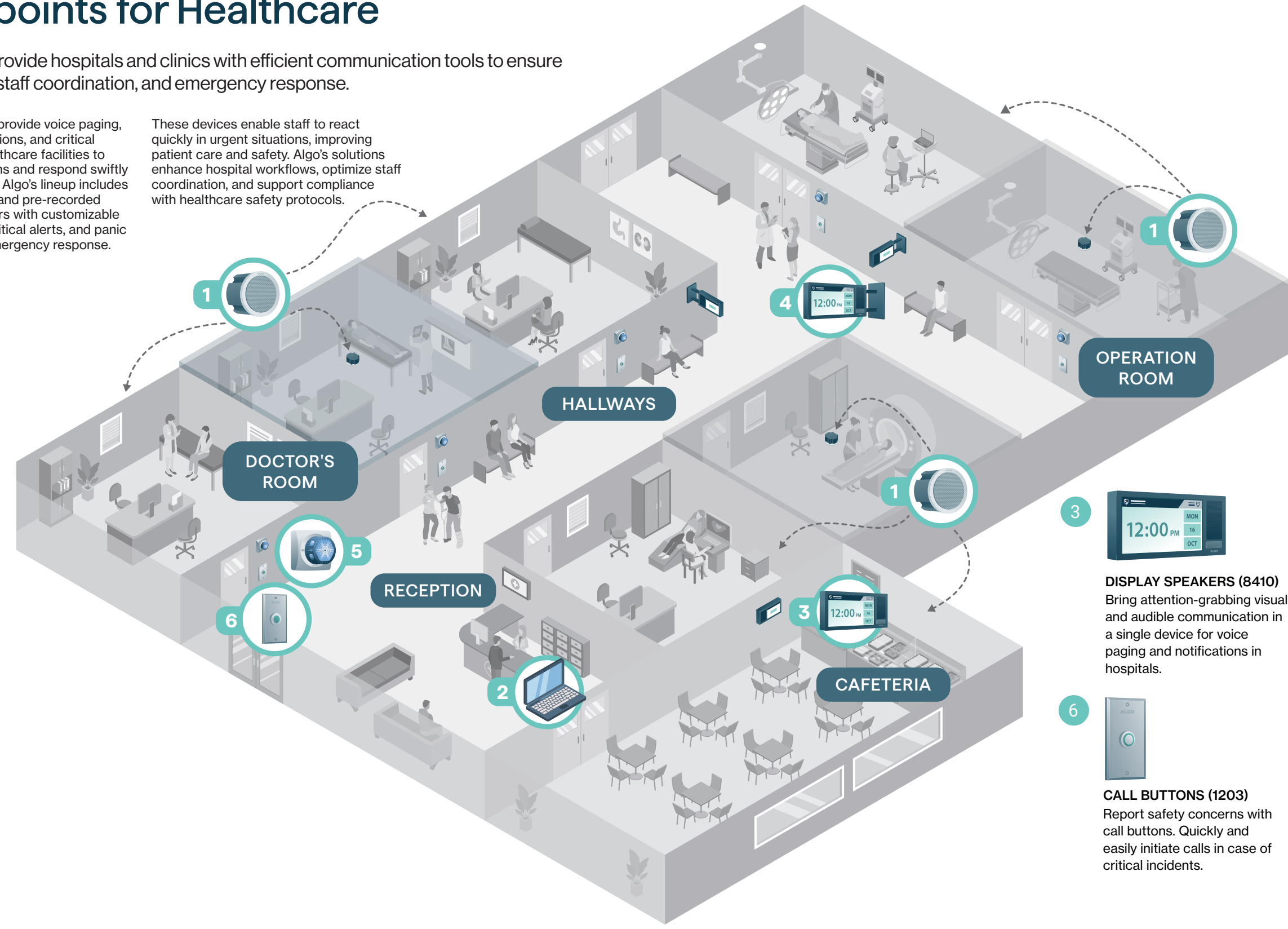
INDUSTRIES

# IP Endpoints for Healthcare

Algo devices provide hospitals and clinics with efficient communication tools to ensure patient safety, staff coordination, and emergency response.


Algo's IP endpoints provide voice paging, emergency notifications, and critical alerts, enabling healthcare facilities to streamline operations and respond swiftly to urgent situations. Algo's lineup includes IP speakers for live and pre-recorded paging, visual alerters with customizable flash patterns for critical alerts, and panic buttons for rapid emergency response.

These devices enable staff to react quickly in urgent situations, improving patient care and safety. Algo's solutions enhance hospital workflows, optimize staff coordination, and support compliance with healthcare safety protocols.



1 

**CEILING SPEAKERS (8198)**  
 Deliver daily notifications and critical messages. Deploy IP paging cost-effectively with Algo Satellite Speaker technology.

2 


**ADMP**  
 Algo Device Management Platform offers cloud-based supervision to monitor all Algo devices in one dashboard.

3 

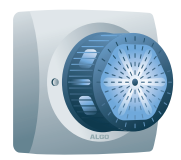
**DISPLAY SPEAKERS (8410)**  
 Bring attention-grabbing visual and audible communication in a single device for voice paging and notifications in hospitals.

4 

**DISPLAY SPEAKERS (8420)**  
 Highly notable alerting in multiple directions, this dual-sided display speaker is best suited for hallways and open spaces.

6 

**CALL BUTTONS (1203)**  
 Report safety concerns with call buttons. Quickly and easily initiate calls in case of critical incidents.

5 

**VISUAL ALERTERS (8138)**  
 Signal important events with multi-color visual communication, and ensure that staff receive urgent alerts.

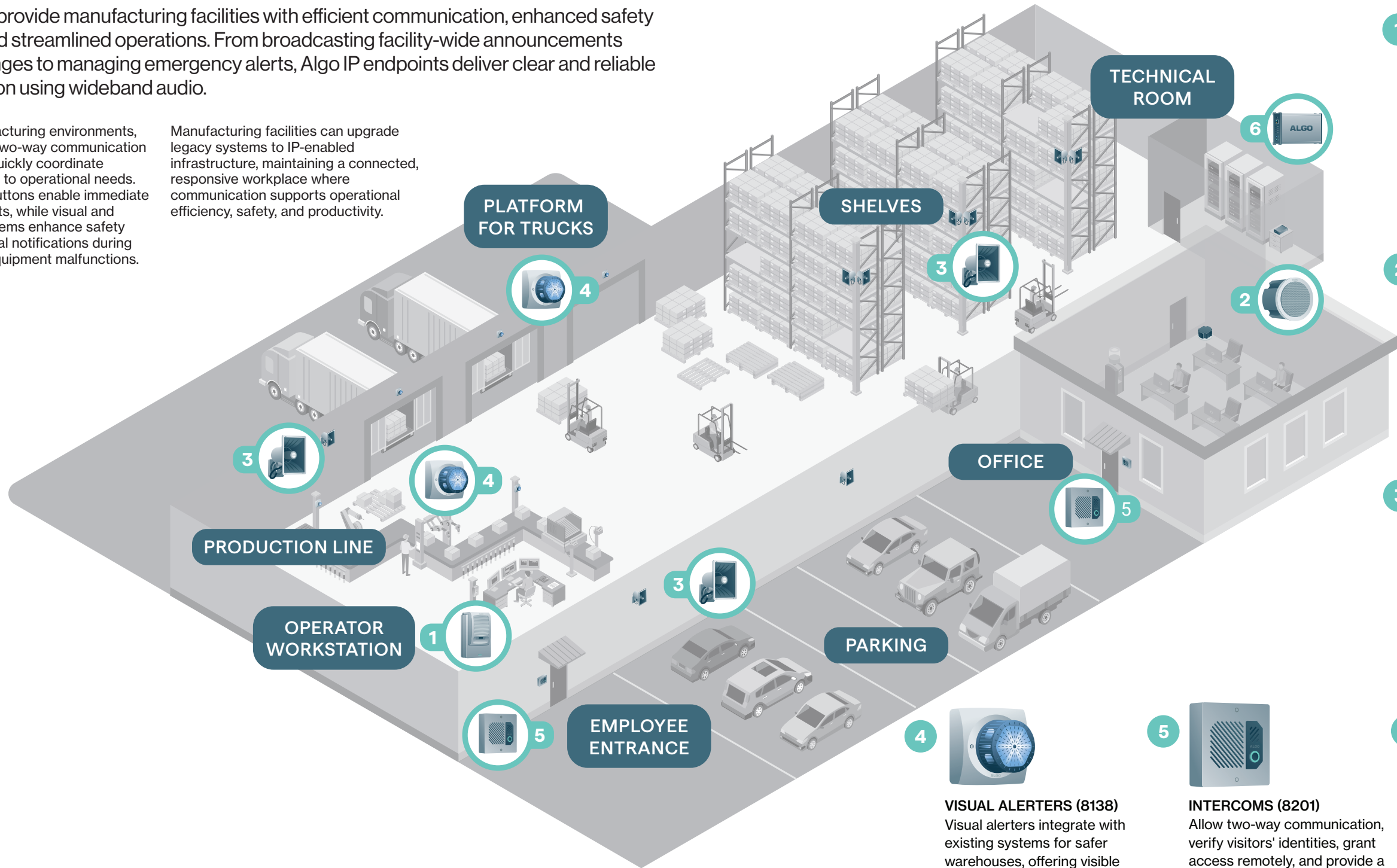
INDUSTRIES

# IP Endpoints for Manufacturing

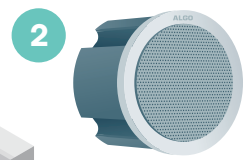
Algo devices provide manufacturing facilities with efficient communication, enhanced safety measures, and streamlined operations. From broadcasting facility-wide announcements and shift changes to managing emergency alerts, Algo IP endpoints deliver clear and reliable communication using wideband audio.

In dynamic manufacturing environments, voice paging and two-way communication ensure staff can quickly coordinate tasks and respond to operational needs. Devices like call buttons enable immediate assistance requests, while visual and audio alerting systems enhance safety by delivering critical notifications during emergencies or equipment malfunctions.

Manufacturing facilities can upgrade legacy systems to IP-enabled infrastructure, maintaining a connected, responsive workplace where communication supports operational efficiency, safety, and productivity.



**AUDIO ALERTERS (8180)**  
Use Audio Alerters for voice paging, emergency alerting and loud ringing, and avoid missed calls in noisy locations or where employees are wearing hearing protection.



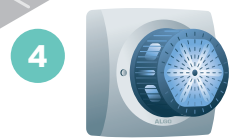
**CEILING SPEAKERS (8188)**  
Ceiling speakers provide crisp and clear communication with even sound distribution, so announcements can be heard clearly by all staff.



**HORN SPEAKERS (8186)**  
Algo's weatherproof horn speakers benefit warehouses with directional sound, wide coverage, durability, and clear audio for announcements & safety instructions.



**PAGING ADAPTERS (8301)**  
Integrate analog PA into IP environments. Paging adapters enhance communication with an embedded scheduler for bells and announcements.



**VISUAL ALERTERS (8138)**  
Visual alerters integrate with existing systems for safer warehouses, offering visible emergency alerts, safety warnings, hearing-impaired accessibility, and door sensor notifications.



**INTERCOMS (8201)**  
Allow two-way communication, verify visitors' identities, grant access remotely, and provide a convenient way to manage entry points, ensuring the safety of the premises.



# ALGO IP Speakers

Algo IP speakers deliver clear audio for voice paging, emergency alerting, and background music. Featuring integrations with SIP, multicast, APIs and smart relays, Algo speakers are compatible with leading UC and emergency notification systems. These speakers are primed for effective communication with wideband audio and ambient noise control.

- Wideband audio
- Ambient noise response
- PoE/PoE+/PoE++ powered



## 8180 IP Audio Alerter

The Algo 8180 IP Audio Alerter is a wall-mount speaker for alerting via voice paging or audio files. The 8180 is a popular speaker for loud ringing applications, with volumes typically eight times louder than a telephone speaker. This compact yet attention-grabbing speaker is easily wall-mountable. As a fully compliant 3rd-party SIP endpoint, the 8180 can be integrated with various UCaaS platforms.

WALL-MOUNT SIP AUDIO ALERTER | LOUD RINGING | VOICE PAGING | PoE



## 8186 IP Horn Speaker

The 8186 IP Horn Speaker is outdoor-rated for voice paging, emergency alerting, and loud ringing applications. This IP speaker is also a fully compliant third-party SIP endpoint. As a result, the 8186 IP horn speaker is compatible with most cloud and premise-based VoIP telephone systems.

SIP HORN SPEAKER | OUTDOOR-RATED | VOICE PAGING & ALERTS | PoE



## 8188 IP Ceiling Speaker

The 8188 IP Ceiling Speaker is a SIP speaker used in a drop ceiling for voice paging, emergency, and playing background music. The speaker is a fully compliant third-party SIP endpoint, and is compatible with most cloud and premise-based VoIP telephone systems.

SIP CEILING SPEAKER | VOICE PAGING | EMERGENCY ALERTS | PoE BACKGROUND MUSIC



## 8189 IP Surface Mount Speaker

The 8189 IP Surface Mount Speaker is designed to deliver excellent audio quality in surface mount applications and ideal for installing on hard surfaces. Featuring wideband audio, Algo ceiling speakers provide enhanced speech clarity and intelligibility for indoor locations, such as offices, classrooms, and hallways.

SIP SURFACE-MOUNT SPEAKER | WIDEBAND AUDIO | INDOOR PAGING | PoE

Learn more: [Algo Features p. 39](#)



## 8190S IP Speaker-Clock & Visual Alerter

The PoE+ 8190S SIP Speaker – Clock & Visual Alerter is an IP paging speaker for the classroom and other commercial public address (PA) system applications. The speaker is also a fully compliant 3rd party SIP endpoint. As a result, the 8190S is compatible with most hosted / cloud and premise-based VoIP telephone systems.

SIP PAGING SPEAKER | PoE+ POWERED | CLOCK & VISUAL ALERTER | PoE



## 8196 IP PoE+ Horn Speaker

The 8196 IP PoE+ Horn Speaker uses Algo's patented satellite speaker technology to power up to three satellite speakers for wider paging and alerting coverage at a fraction of the cost of standard outdoor deployments.

SIP HORN SPEAKER | PoE+ POWERED | SATELLITE SPEAKER SUPPORT



## 8197 IP Horn Speaker

The Algo 8197 IP Horn Speaker is engineered for resilience, featuring PoE+ power, 119 dB audio output, and IP69 rating. Designed for harsh environments, this speaker requires no additional gaskets or mounts, making it a rugged solution for challenging outdoor audio environments.

SIP HORN SPEAKER | PoE+ POWERED | OUTDOOR AUDIO ENVIRONMENT



## 8198 IP PoE+ Ceiling Speaker

The 8198 IP PoE+ Ceiling Speaker uses Algo's patented satellite speaker technology to power up to three satellite speakers for wider paging and alerting coverage at a fraction of the cost of standard ceiling speaker deployments.

SIP CEILING SPEAKER | PoE+ POWERED | SATELLITE SPEAKER SUPPORT  
PAGING AND ALERTING | BACKGROUND MUSIC

Learn more: [Algo Features p. 39](#)



## 8507 IP Horn Array Speaker

The Algo 8507 IP Horn Array Speaker is a highly durable speaker designed to deliver clear, intelligible audio in reverberant, loud environments. Installed vertically, the 8507 creates a dispersion pattern with narrow vertical and wide horizontal coverage. Made to withstand harsh weather events, the 8507 is also IPX9-rated and functions in temperatures from -40°F/-40°C to 122°F/50°C.

IP HORN ARRAY | HIGH-NOISE ENVIRONMENTS | WEATHER-RESISTANT (IPX9)  
AC 110-220

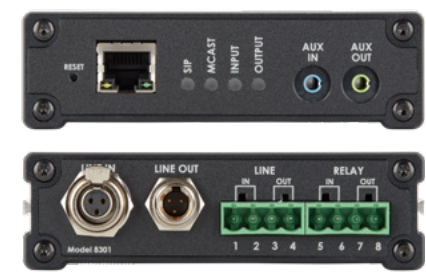




# ALGO IP Paging Adapters

Algo IP paging adapters seamlessly bridge IP environments to legacy paging systems. Paging adapters allow companies to retain legacy infrastructure, including zone paging from a zoned amplifier, while acquiring the benefits of IP paging. Adapters can connect to legacy amplifiers, phones, speakers, and communication systems enabling integration with VoIP and UCaaS platforms.

- Advanced Event Scheduling
- Multicast
- Third-party SIP Integration

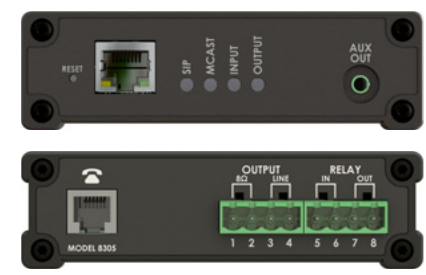


## 8301 IP Paging Adapter & Scheduler

The Algo 8301 emulates a page port, similar to what is found on a legacy PBX to connect directly to a traditional analog amplifier. This enables legacy or IP devices to be connected to VoIP or UCaaS platforms for enhanced communication control.

**Choose the 8301** when working to integrate legacy paging amplifiers to an IP based systems. This is the go-to adapter for most setups and needs.

SIP PAGING ADAPTER | PAGE PORT EMULATION | LEGACY-TO-IP BRIDGE | PoE

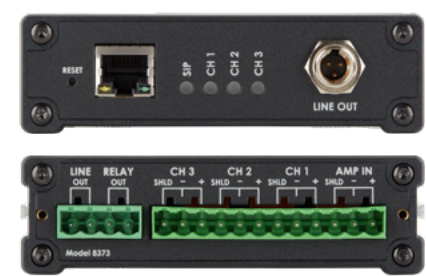


## 8305 Multi-Interface IP Paging Adapter

The Algo 8305 has three key connection points: a telephone port that emulates an analog telephone, an 8 Ω output that can connect to self-amplified speakers, and a line output, like the 8301. This enables legacy or IP devices to be connected to VoIP or UCaaS platforms for enhanced communication control.

**Choose the 8305** when working to integrate legacy communication systems (specifically ones that have FXS and need to connect to a telephone/FXO port) to an IP based system.

SIP PAGING ADAPTER | ANALOG PHONE EMULATION | LEGACY-TO-IP INTEGRATION | PoE



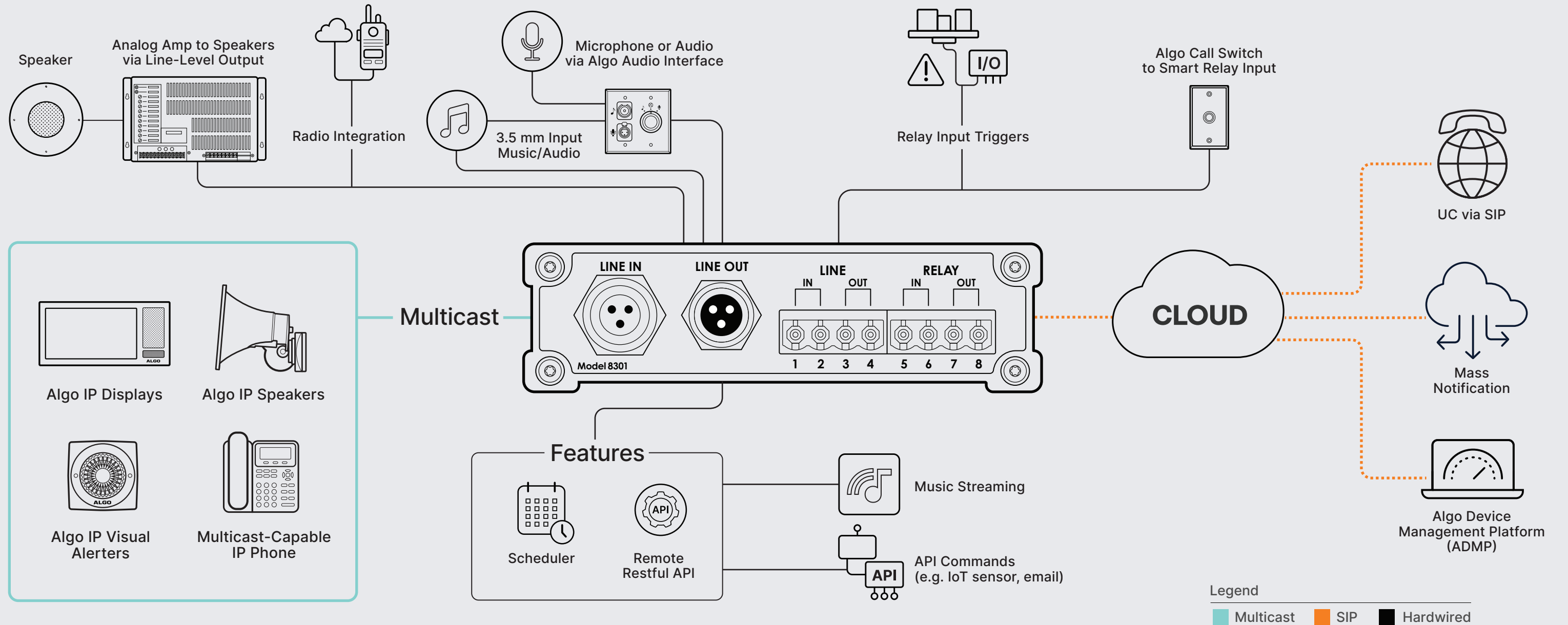
## 8373 IP Zone Paging Adapter

The Algo 8373 can be used as a replacement for a legacy zone controller or to add page zones to an existing single zone amplifier. Three zones are configurable on the 8373 which can be expanded further using multicast. The device also has a contact closure. This enables connecting legacy or IP devices to VoIP or UCaaS platforms for enhanced communication control.

**Choose the 8373** when working to integrate a legacy amplifier with zones or to eliminate the analog zone controller, simplifying the solution (up to three groups of analog speakers to retain zoning infrastructure) to an IP based system.

SIP ZONE CONTROLLER | MULTICAST EXPANSION | CONTACT CLOSURE | PoE

Learn more: [Algo Features p. 39](#)



IP PAGING ADAPTERS

# Integrate Legacy & Modern Paging Systems

Use Algo IP paging adapters to retain legacy infrastructure while adding new technology to create hybrid, scalable environments for voice paging and emergency alerting.

Algo IP paging adapters use SIP, multicast, APIs, and smart relays to create more robust and reliable paging systems. Adapters can connect to legacy amplifiers, phones, speakers, and communication systems enabling integration with VoIP and UCaaS platforms.

Effectively modernize analog paging environments without replacing legacy infrastructure. Whether it's functional PA infrastructure, such as analog speakers and amplifiers, retain legacy devices for as long as they can last while connecting to IP devices, VoIP systems, or UCaaS platforms.

- **Connect to legacy environments:** Unlock connections to modern technology while keeping your existing legacy amplifiers, phones, speakers, and communication systems in place.
- **Create a hybrid environment:** Keep up with modern technology in a cost-efficient way by using SIP, multicast, and APIs to connect IP devices and cloud platforms.
- **Transition to a full IP environment:** As you begin to need to replace old equipment, you're able to opt to use IP endpoints that will continue to enhance your ability to maintain and manage a robust paging system.

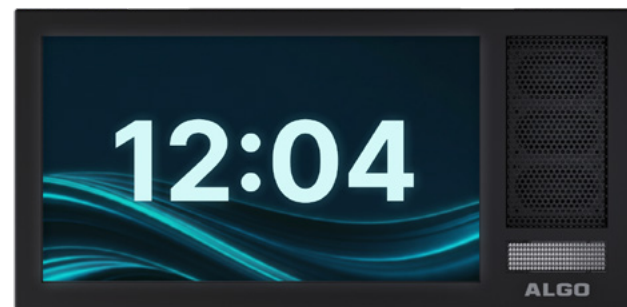
Learn more: [Algo Features p. 39](#)



### 8420 IP Dual-Sided Display Speaker

The 8420 offers dual 15.6" LCD screens, allowing for high-visibility messaging in multiple directions. Equipped with wideband speakers and LED flashers, it ensures comprehensive audio and visual alerting in busy or large-scale environments. (Side-mount option pictured on face page.)

15.6" LCD DISPLAY | VISUAL & AUDIO ALERTS | WIDEBAND SPEAKERS



### 8410 IP Display Speaker

The 8410 features a 15.6" LCD screen, high-performance wideband speakers, and LED flashers, making it ideal for clear and effective visual and audio communication. Single-sided designed for all-mount applications.

DUAL 15.6" LCD DISPLAYS | VISUAL & AUDIO ALERTS | WIDEBAND SPEAKERS

# ALGO IP Display Speakers

Algo IP Display Speakers ensure critical information is seen and heard in any setting. Designed for education, healthcare, manufacturing, and enterprise environments, these devices deliver clear and effective messaging via screen, speakers, and LED flashers for emergency alerts, routine paging, and scheduled notifications.

Customizable 15.6" LCD, full HD (1080p)

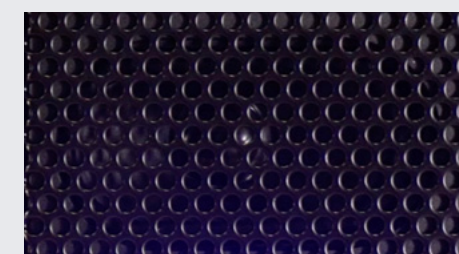
High intelligibility speakers

High-visibility Multicolor LED flashers

## 3-in-1 Device



Screen – Customizable LCD display delivers text, images, and graphics, ensuring messages are highly visible in any environment.



Speaker – High intelligibility speakers deliver wideband audio for clear voice paging, emergency alerts, and daily notifications.



Strobe Light – High-intensity multicolor LED flashers provide attention-grabbing visual alerts for urgent notifications.



### 8128 IP Visual Alerter

The Algo 8128 is a weatherproof strobe light used to signal paging, telephone, and emergency events. The 8128 is single-color (white) with optional colored lenses (red, blue, amber), and is equipped with 11 configurable flash patterns, each with three brightness levels to best suit application requirements.

SIP STROBE LIGHT | WEATHERPROOF | 11 FLASH PATTERNS



### 8138 IP Color Visual Alerter

The Algo 8138 is a four-color (red, green, blue, amber) weatherproof strobe light used to signal paging, telephone, and emergency events. The 8138 is equipped with multiple flash patterns for distinctive alerts, and is ideal for noisy environments where workers may be wearing protective gear.

WEATHERPROOF STROBE | DISTINCTIVE FLASH PATTERNS | IDEAL FOR NOISY SPACES

# ALGO IP Visual Alerters

Algo's IP Visual Alerters deliver highly noticeable visual alerting for telephone ring detection, safety, security, and emergency notification in noisy environments where audio notifications may be missed. With customizable flash patterns, colors, and intensity, these strobe lights can also integrate with IP speakers and paging systems to provide holistic alerting solutions.

- High visibility LED + design
- Configurable flash patterns
- Outdoor-rated Long-life LED, IPX6

#### Instant Awareness

Algo visual alerters are incredibly bright and eye-catching, bringing instant awareness to variety of different events. As part of a visual alerting system, Algo strobe lights bring 360°x180° visibility and may reflect off a flat surface when installed against a wall or ceiling.

#### Silent Alerting

Whether in a manufacturing environment where there is often loud background noise or in a school where there is a flurry of information any given day that needs to be shared, the bright patterns of visual alerters can easily capture the attention of an audience.

#### Augmented Audio

In certain environments, audible messages may go unnoticed due to loud ambient noise or if occupants of the building are wearing hearing protection. Organizations may deploy visual alerters to make building occupants aware that a voice page or announcement is being relayed over the PA system.

#### Personnel Activities

Organizations may configure Algo IP Visual Alerters to activate when a personnel activity is in progress. During an event, the visual alerter may represent a status light, alerting the audience of an action taking place.



### 8402 IP Dual-Sided Clock

The Algo 8402 IP Dual-Sided Clock is a high-visibility, NTP-capable, PoE clock. The 8402 is double-sided and mounted perpendicular to a wall providing visibility from multiple angles, making it ideal for high-traffic areas like hallways and lobbies.

PoE IP CLOCK | DUAL-SIDED DISPLAY | MULTI-ANGLE VISIBILITY



### 8401 IP Single-Sided Clock

The Algo 8401 IP Single-Sided Clock is a high-visibility, NTP-capable, PoE clock. Designed to be highly accessible for those with visual impairments, the 8401 is ideal for classrooms, lunchrooms, and meeting rooms.

PoE IP CLOCK | HIGH VISIBILITY | SINGLE-SIDED DISPLAY

## ALGO IP Clocks

Algo IP clocks feature high-visibility LED displays, network-synchronized time display, and remote management via web interface, ensuring accuracy without manual adjustments. Seamlessly integrating with IP communication systems, they enhance efficiency, coordination, and operational flow.

- PoE-powered
- NTP synchronization
- Remote configuration

#### Readability

Time is displayed using white LED digits against a black housing, offering strong contrast and improved readability compared to standard red LED clocks. This design supports visibility in various lighting conditions and is more accessible for users with color blindness or visual impairments.

#### Configurability

Configuration is simple through a browser-based interface, with options for time zone, daylight saving preferences, brightness, and 12- or 24-hour format. For larger deployments, IT administrators can monitor status and manage devices remotely using the Algo 8300 or ADMP.

#### Synched for Accuracy

The Algo IP Clocks provide high contrast, synchronized time display for any environment where accuracy and visibility are essential. Powered by PoE and synchronized via NTP, these clocks ensure reliable timekeeping across classrooms, offices, warehouses, and other busy facilities.



### 8450 IP CONSOLE

## Enhanced Control for Paging and Emergency Response

Designed for education, healthcare, and industrial facilities, the 8450 IP Console integrates seamlessly with IP paging ecosystems using SIP, multicast, and API support. Redundancy features allow broadcasts to continue even if external networks are down, ensuring reliable communication during emergencies.

#### Display

With a 10.1" LCD display, the console enables intuitive activation of paging by schedule, zone, or type, streamlining communication for daily operations and critical events.

#### Gooseneck Microphone

A gooseneck microphone allows for live announcements, while touchscreen buttons can be configured to trigger pre-recorded messages or alerts.

#### Action Button

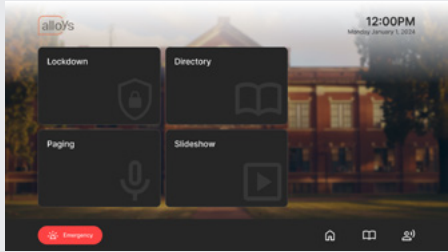
The tactile, backlit action button can be customized for push-to-talk, screen activation, or screen lock.

# ALGO IP Console

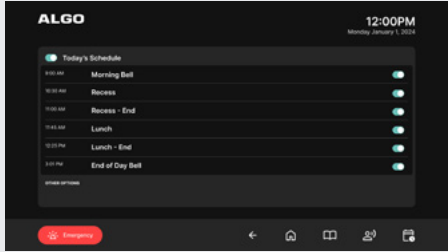
The Algo 8450 IP Console optimizes communication and control for facilities that require flexible and reliable paging and emergency alerting. With a customizable 10.1" touchscreen interface, this input device allows users to easily broadcast live or pre-recorded messages and initiate emergency alerts.

- 10.1" LCD touchscreen
- Customizable screens and buttons
- Desk, wall, or rack mounting options

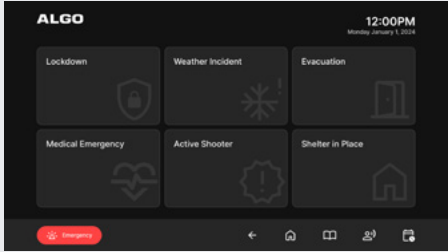
## Features and Applications



Intuitive touchscreen interface



Situation Awareness



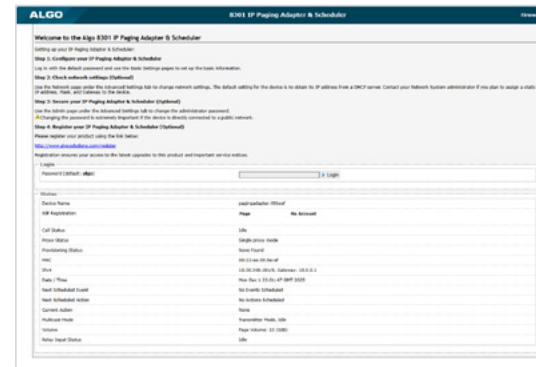
Emergency Alerting



# ALGO Device Management

Algo offers both on-premise and cloud-based solutions to simplify IP endpoint supervision, configuration, and troubleshooting. Whether managing a single site or a large-scale deployment, Algo's device management tools provide centralized control for seamless monitoring and maintenance.

- Centralized endpoint management
- Configure and monitor devices across networks
- Simple dashboard



## Web Interface

Each Algo device features a user-friendly web interface for quick configuration and monitoring. Accessible via IP address, users can control all device settings without additional software.

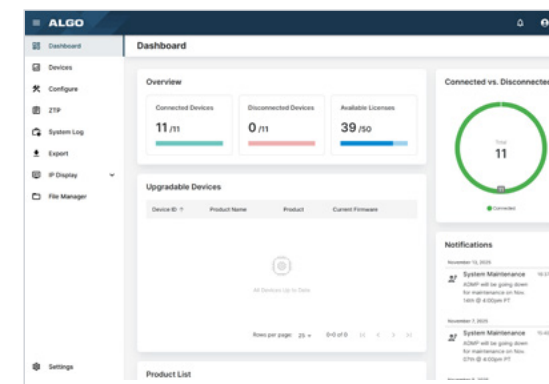
WEB ACCESS | CONFIGURATION AND MONITORING | CONTROL DEVICES



## 8300 IP Controller

The Algo 8300 is an on-premise device manager designed for reliability and minimal downtime. It centralizes supervision of IP endpoints, ensuring uninterrupted operation.

DEVICE MANAGEMENT | CENTRALIZED SUPERVISION OF IP ENDPOINTS



## Algo Device Management Platform

ADMP is a cloud-based tool that simplifies device management. It provides real-time monitoring, remote configuration, and firmware updates, enabling organizations to oversee all Algo endpoints across a single site or multiple sites from a single dashboard. In addition, ADMP supports proactive device management, such as building screens, assembling zones, and deploying configuration files and ZTP.

REAL-TIME MONITORING | MULTI-TENANCY SUPPORT | ONE-CLICK CONFIGURATION

Learn more: [Algo Features p. 39](#)



# ALGO IP Intercoms

Algo IP Intercoms provide secure access control for doors and gates. Equipped with features like two-way communication, video functionality, durable outdoor construction, and vandal-proofing, Algo intercoms fortify premise security.

- Outdoor rated
- Two-way talkback
- Wideband audio



## 8028 IP Doorphone

The Algo 8028 IP Doorphone provides two-way communication via an intercom and securely stored door controller for secure door or gate entrances, access points, or call station

SIP DOORPHONE | TWO-WAY INTERCOM | SECURE DOOR CONTROL



## 8063 IP Door Controller

The Algo 8063 IP Door Controller is a compact I/O interface for secure door control. Designed to be placed securely away from entryways to eliminate the possibility of tampering and unauthorized access, the Algo 8063 is compatible with Algo intercoms, door strikes, and other access control systems.

SIP DOOR CONTROLLER | REMOTE-MOUNT DESIGN | INTERCOM/STRIKE INTEGRATION



## 8039 IP Video Mullion Intercom

The Algo 8039 IP Video Mullion Intercom is a durable, outdoor-rated video intercom with 187° visibility for two-way communication at a secure door entrance framed in a mullion. The 8039 can be used for secure door control by keypress for streamlined access management.

VIDEO MULLION INTERCOM | 187° WIDE VISIBILITY | OUTDOOR-RATED



## 8201 IP PoE Intercom

The 8201 IP PoE Intercom provides two-way communication ideal for internal access points or call stations. The 8201 has a built-in door relay to conveniently unlock internal access points

SIP PoE INTERCOM | TWO-WAY COMMUNICATION | BUILT-IN DOOR RELAY



## 8203 Vandal-Proof IP Intercom

The 8203 Vandal-Proof IP Intercom is a rugged, low-profile, outdoor-rated intercom ideal for two-way communication at internal access points or call stations. The 8203 has a built-in door relay to conveniently unlock internal access points with a keypress from an answering device.

VANDAL-PROOF INTERCOM | OUTDOOR-RATED | BUILT-IN DOOR RELAY

Learn more: [Algo Features p. 39](#)



# ALGO Accessories

Algo offers a range of accessories designed to enhance the functionality and flexibility of IP deployments. From call buttons and volume controls to audio interfaces and ring detectors, these accessories integrate seamlessly with Algo IP endpoints.

- Complement core IP endpoints
- Customized applications
- Flexibility, adaptability, added functionality



## 1202 Call Button

For any application requiring one-touch programmable announcement or alert notification, the 1202 is designed as a simple and intuitive interface for emergency and non-emergency alerting or for improving customer service.

ONE-TOUCH ALERTING | PROGRAMMABLE BUTTON | SIMPLE USER INTERFACE



## 1203 Call Switch

The Algo 1203 Call Switch is a single-gang illuminated LED button. For programmable announcements or alert notification, the 1203 is designed as a simple and intuitive interface for emergency and non-emergency alerting or for improving customer service.

LED CALL SWITCH | PROGRAMMABLE ALERTS | ONE-TOUCH ACTIVATION



## 1204 Volume Control

The 1204 Volume Control is a ten-position rotary control. Installed in a single-gang faceplate, the 1204 offers convenient wall-mount volume adjustment, including muting. The accessory connects to the relay input of an Algo IP endpoint and may control a single endpoint or multiple endpoints.

WALL-MOUNT ROTARY VOLUME CONTROL | ENDPOINT RELAY INTEGRATION



## 1205 Audio Interface

The 1205 Audio Interface provides a method for connecting a music source and microphone to the Algo 8301 IP Paging Adapter. Audio from the 8301 can be broadcast using multicast over the network to IP endpoints, including Algo speakers and multicast-supported telephones.

MUSIC & MIC INPUT | MULTICAST PAGING | IP ENDPOINT INTEGRATION



## 2507 Ring Detector

The 2507 Ring Detector is designed to enable loud ringing, notification, and visual alerting directly from a compatible IP phone. The Ring Detector can detect when the phone is ringing and activate an Algo device with a smart relay input, such as a speaker or strobe light.

IP PHONE RING DETECTION | LOUD RINGING | VISUAL ALERT TRIGGER

Learn more: [Algo Features p. 39](#)



# Algo Features: What's Under the Hood

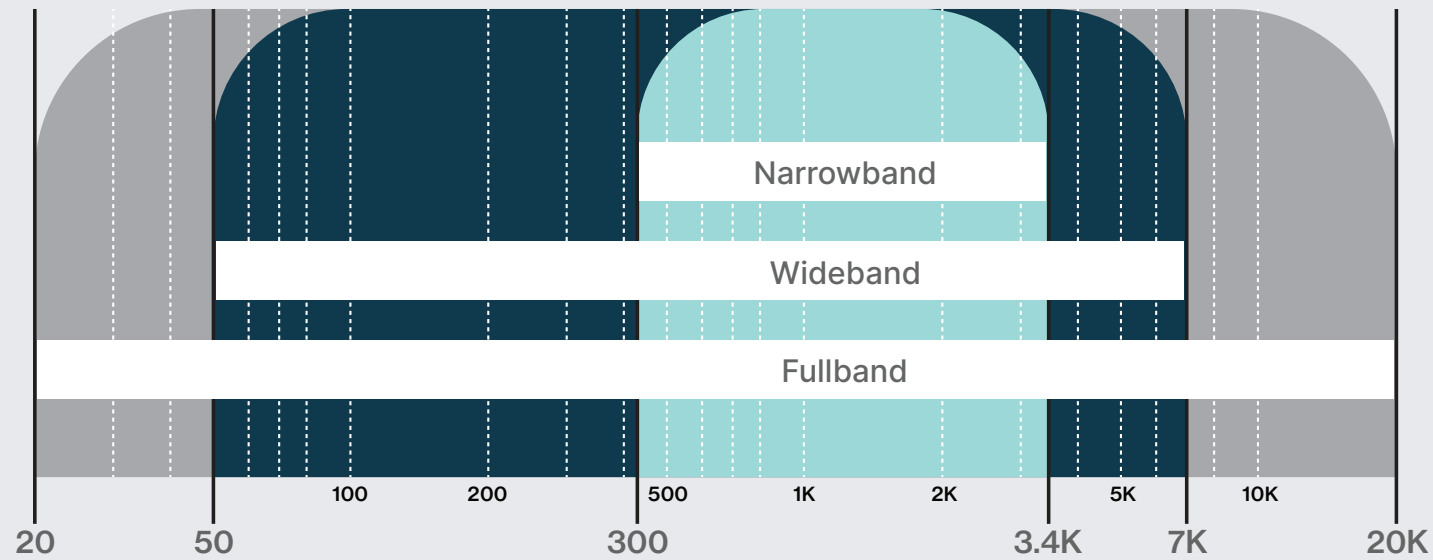
Algo IP endpoints are feature-rich by design, delivering strong performance, flexible integration, and the adaptability required to support a wide range of communication needs. Built to operate across diverse environments, Algo solutions can be tailored to meet site-specific requirements while maintaining consistent performance.

All Algo IP endpoints share a core foundation of capabilities, including Power over Ethernet (PoE), remote configuration and management, multicast scalability, and high-quality audio. On top of this standard feature set, Algo layers product category-specific capabilities that extend functionality and unlock the full potential of each IP endpoint, such as satellite support for speakers, scheduling for adapters, and fault detection for intercoms.

Designed for streamlined deployment and long-term operation, Algo devices support industry-standard SIP interoperability, API, self-amplified designs to reduce system complexity, and intuitive management tools backed by robust security, providing a scalable and dependable communication foundation for enterprise environments.

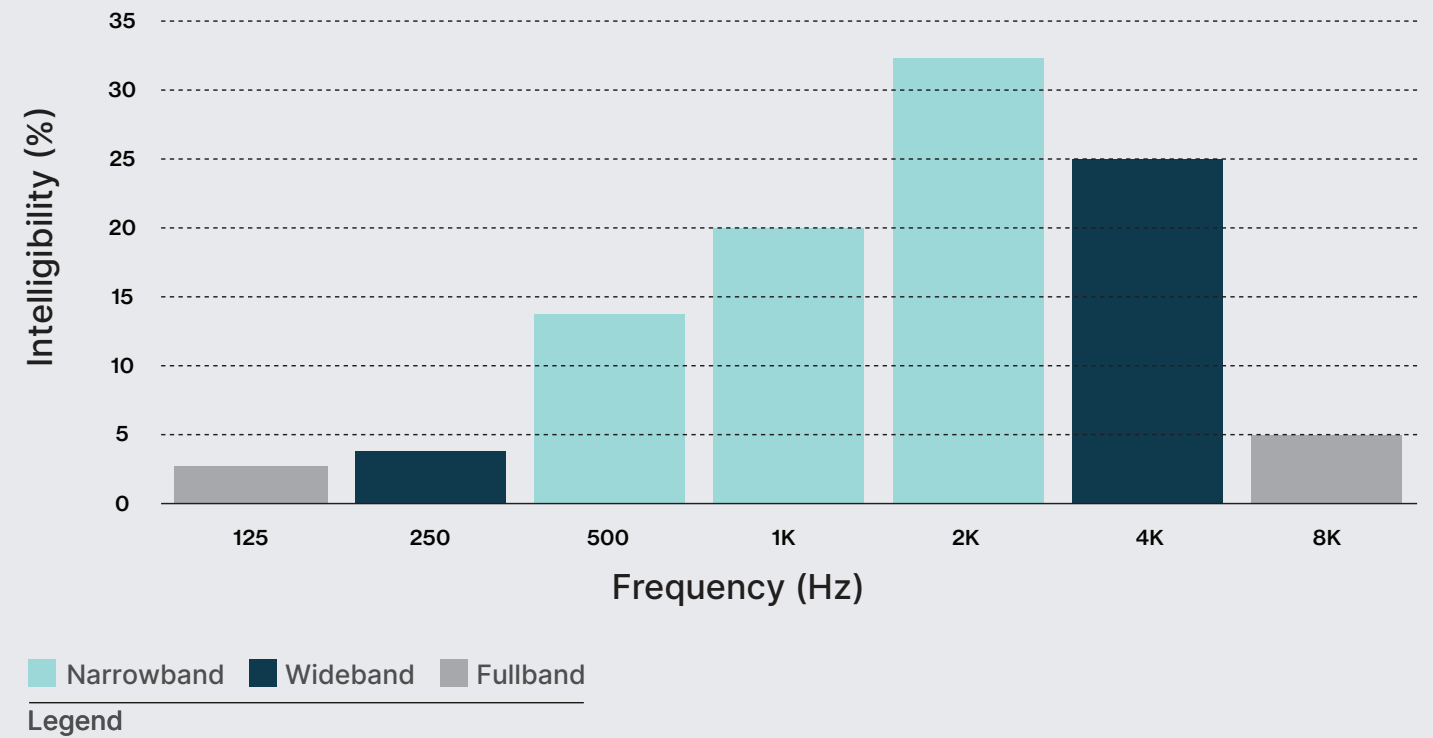
### Wideband Frequencies

Wideband captures over 90% intelligibility across the frequency spectrum



### Intelligibility

Impact of Frequencies on Speech Intelligibility



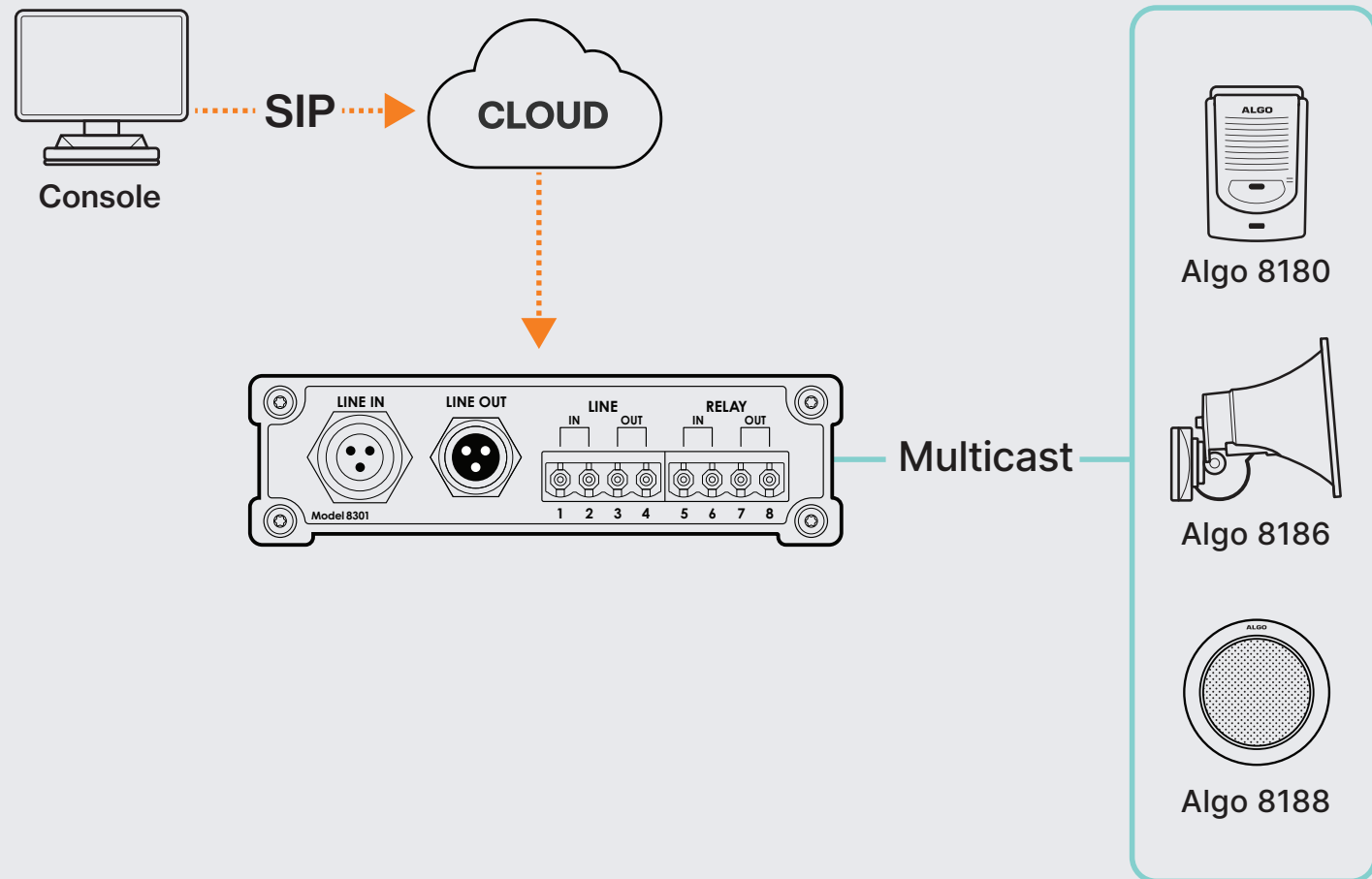
ALGO FEATURES

# Wideband Audio

All Algo devices support wideband audio (G.722 voice codec) for improved sound quality and speech intelligibility to enhance VoIP communication for voice paging, emergency notification, and audible alerting.

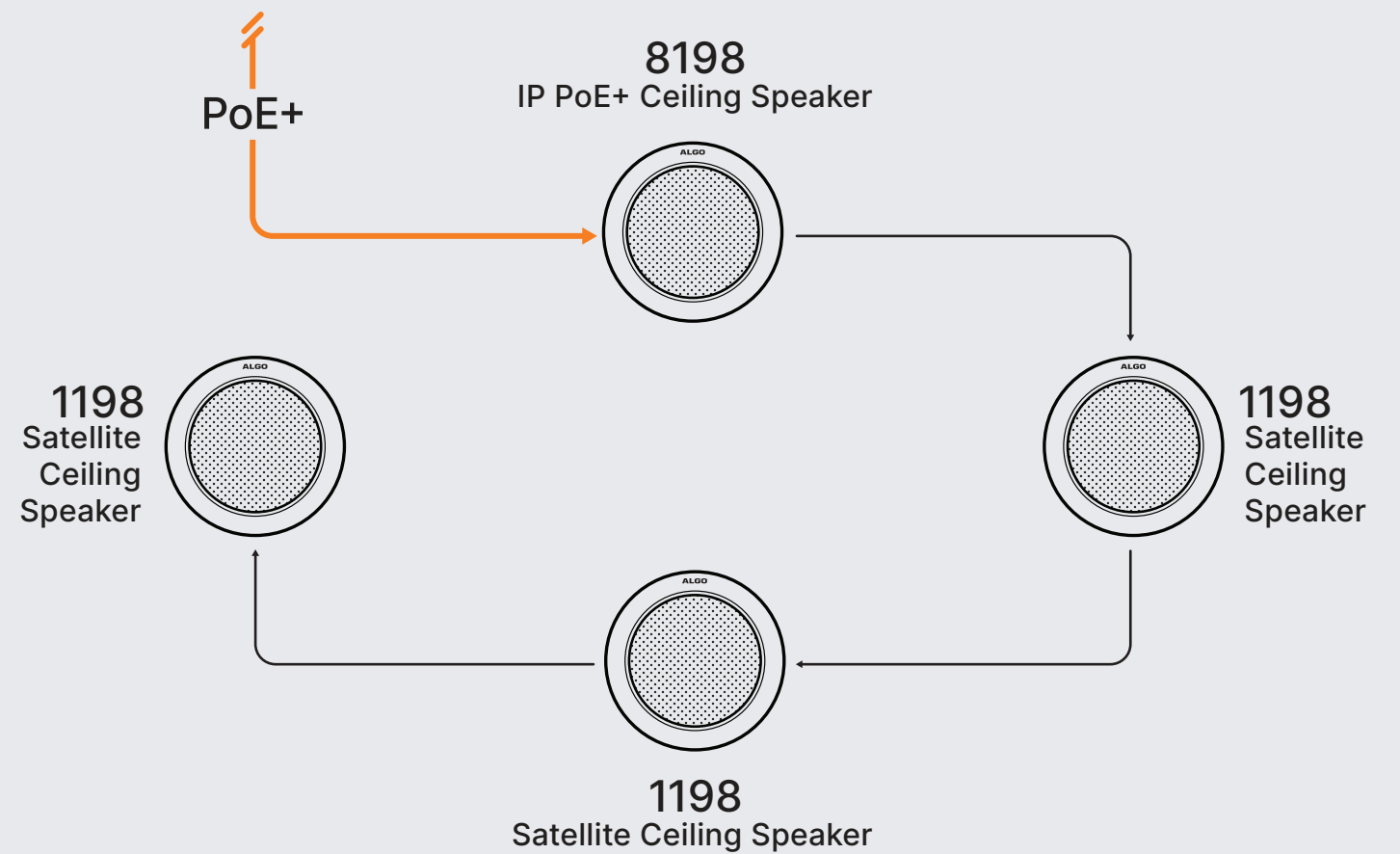
Wideband audio, enhances sound quality in VoIP communications by expanding the frequency range to 50–7,000 Hz compared to the 300–3,400 Hz range of traditional narrowband audio. This broader spectrum improves speech intelligibility, particularly for consonant and enriches the listening experience for paging, announcements, and music. Algo’s IP endpoints support wideband audio, ensuring clear and effective communication across various applications.

In the event of an emergency, it is important to have cooperation from everyone. If a voice over the PA system is instructing everyone on safety procedures, the message is only as good as it is understood. Being able to easily process and understand messages in emergency situations can bring a sense of ease to the audience as they understand clearly what is being said, understand what they need to do, and understand that the situation is being controlled. The audio quality of a device can help ensure messages are delivered with clarity, avoiding misinterpretation or confusion.



■ SIP ■ Multicast

Legend



■ PoE+ Network Connection ■ Hardwired (up to 150 feet)

Legend

ALGO FEATURES

# Multicast

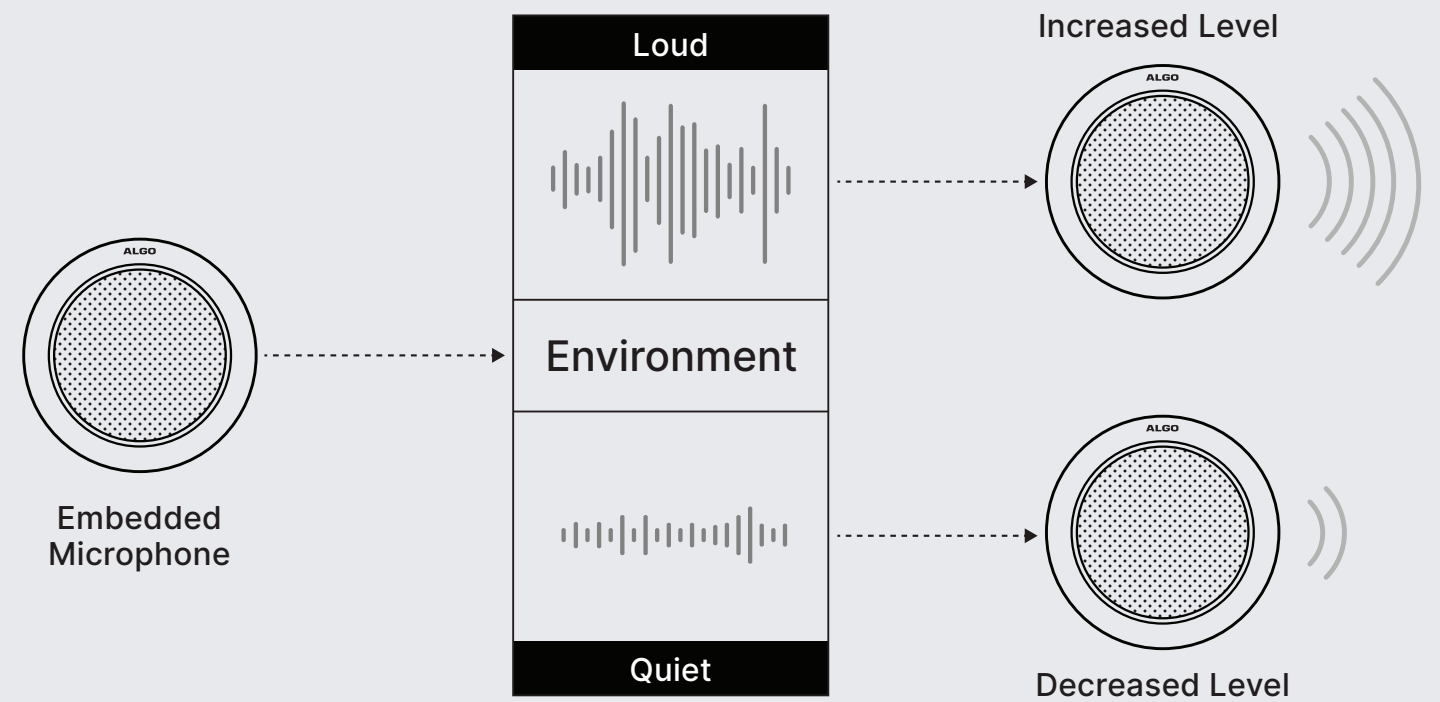
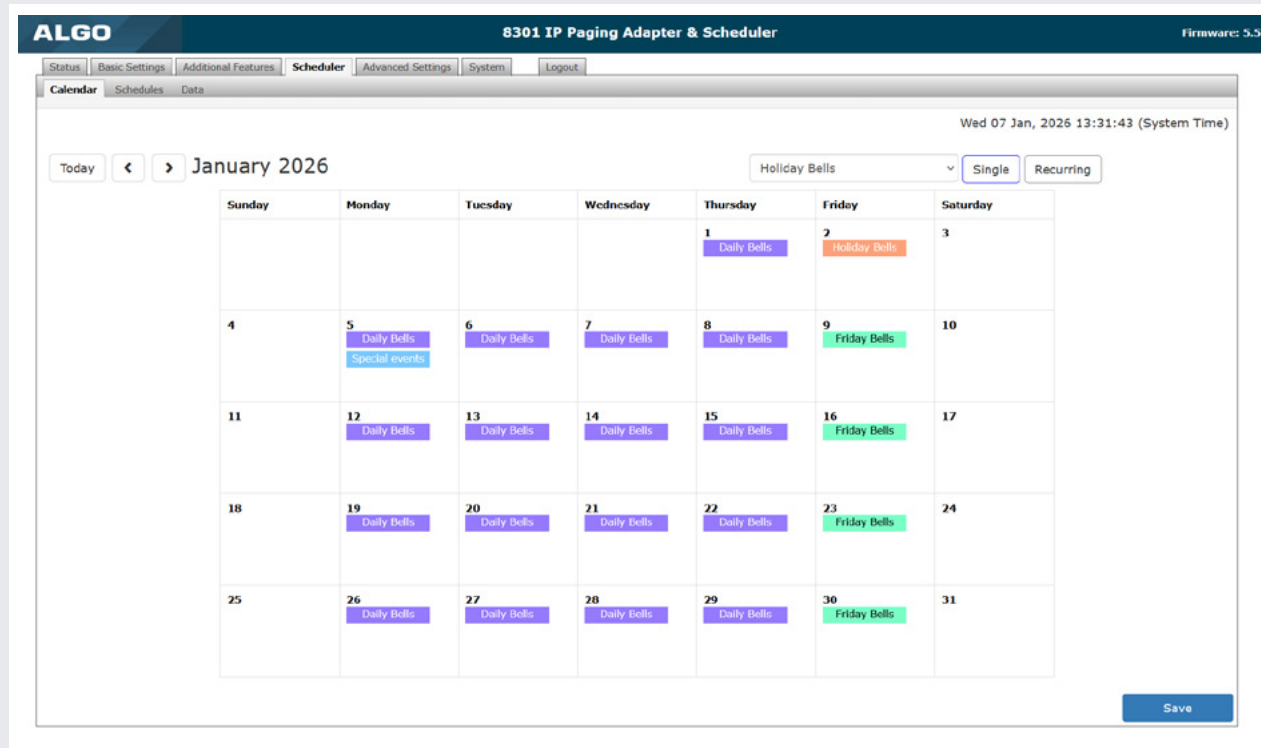
Algo IP endpoints support multicast to efficiently deliver voice paging, notifications, and alerts to groups of devices across a network. By assigning endpoints to multicast zones, a single multicast transmission can reach any combination of speakers, adapters, visual alerters, or supported IP phones configured to receive that stream without requiring each device to be individually registered to the UC platform. This enables highly scalable one-to-many communication that expands coverage across rooms, buildings, or entire campuses while minimizing network traffic and reducing SIP licensing overhead.

ALGO FEATURES

# Satellite Technology

Algo's satellite speaker technology enables the connection of up to three satellite speakers to a single IP speaker. This configuration allows speakers to share the 16W of available audio power from the main IP speaker, effectively expanding coverage while reducing the need for additional network ports and cable drops. Each satellite speaker is automatically detected and monitored for connectivity for increased reliability. This approach maintains the benefits of IP paging, including remote network configuration, endpoint supervision, multicast scalability, and superior audio performance while reducing the cost of IP speaker deployment by up to 75 percent.

Algo satellite speaker technology is supported and deployable via 8198, 8196, 8197, and 8199.



ALGO FEATURES

# Scheduler

Selected Algo devices include a built-in scheduler for automating the playback of tones, bells, announcements, and other audio files. The scheduler uses NTP time synchronization to ensure accurate timing and seamless coordination with IP clocks and other networked endpoints, making it well-suited for environments such as schools, retail and healthcare facilities, and workplaces.

This enables reliable playback of pre-recorded messages, bells, or chimes to both legacy audio systems and IP endpoints, with custom WAV or MP3 files and on-board storage for managing audio content. It also allows for scheduled music playback.

ALGO FEATURES

# Ambient Noise & Two-Way Talk

All Algo speakers include an embedded microphone that enables two key functions in a paging system: ambient noise response and two-way communication.

The speaker continuously monitors ambient noise and automatically adjusts its output level to ensure messages are clear without being overpowering. Volume increases in loud environments and decreases in quiet ones, with user-defined minimum and maximum limits for each space.

The microphone also supports two-way communication, ideal for offices, classrooms, and other areas where operators may need real-time interaction with occupants for inquiries, updates, or instructions.



# Winning with Algo

## Algo Partner Program

The Algo Partner Program equips resellers, integrators, distributors, and technology partners with the resources to succeed. Partners gain access to sales tools, technical training, installation best practices, and dedicated support to help you confidently deploy and service Algo solutions. With ongoing education, marketing collaboration, and expert assistance, Algo helps partners grow and deliver seamless IP communication solutions. Join today to access exclusive benefits and support.

[algosolutions.com/integrator/](https://algosolutions.com/integrator/)

## Algo Design Services

Algo's design services provide expert guidance in creating customized IP communication solutions. Our team collaborates with you to develop a comprehensive project design, recommending the ideal combination of Algo IP endpoints for your environment. This process includes a detailed bill of materials and expert support to ensure seamless implementation and on-site evaluation.

[algosolutions.com/resources/design-services/](https://algosolutions.com/resources/design-services/)



CONTACT US

**We Are Here,  
Wherever You Are**

	PHONE	EMAIL	HEADQUARTERS ADDRESS
<b>General</b>	1-604-454-3790	<a href="mailto:info@algosolutions.com">info@algosolutions.com</a>	Algo Communication Products Ltd. 4500 Beedie Street Burnaby, BC, Canada V5J 5L2
<b>Pre-Sale Support</b>	1-604-454-3790	<a href="mailto:sales@algosolutions.com">sales@algosolutions.com</a>	
<b>Post-Sale Technical Support</b>	1-604-454-3792	<a href="mailto:support@algosolutions.com">support@algosolutions.com</a>	
<b>EMEA Pre-Sale Support</b>	44 20 3866 4410	<a href="mailto:emeasales@algosolutions.com">emeasales@algosolutions.com</a>	



**ALGO**  
algosolutions.com

**ALGO**

© Algo Communication Products Ltd.  
All Rights Reserved